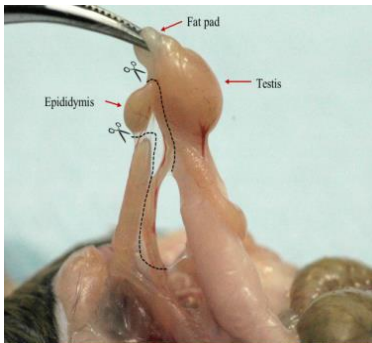


Shipping Refrigerated Epididymides

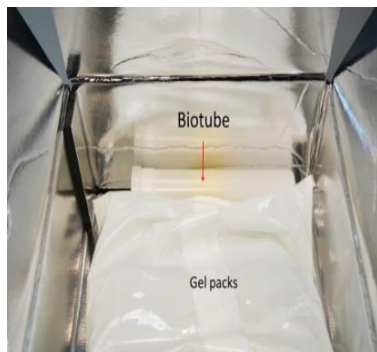
- Thaw the 1.5ml Eppendorf tube containing 1.2ml Lifer preservation medium, supplemented with 10 μ M S1P, on the bench for 30mins before use.



- Dissect cauda epididymides from selected male > 10 weeks old.
- Gently place epididymides into Eppendorf tube, ensuring they are completely submerged in Lifer solution.



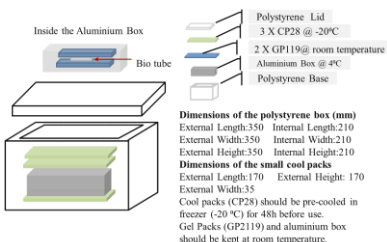
- Seal tube with parafilm.
- Place the tube containing the epididymides into biotube which is supplied within the cold transportation kit.



- Place biotube into aluminium lined box (room temperature).
- Place two gel cool packs (room temperature) into aluminium box, surrounding biotube.



- Seal aluminium box with sellotape.
- Place aluminium box into polystyrene container following assembly instructions.



- Seal polystyrene container with packing tape.
- Place polystyrene container into cardboard box.
- Send package via regular delivery service.

